

# Reactor 5 Source Code

Workflow Automation

Business Process Integration

Web Services Orchestration

## Royalty-Free Workflow Engine Source Code with the Peace of Mind of Support and Maintenance

Now you can process enable all your applications, own your code to the core – and enjoy all the benefits of world-class, developer-focused support with J2EE-based, XML-driven Reactor 5 Source Code from Oak Grove Systems.



### Reactor 5 Source Code

For a one-time, upfront fee, you receive the Reactor 5 Source Code process execution framework, giving you the ability to:

- Slash your development costs
- Speed your time to market
- Reduce your risk with expert technical support
- Increase your sales with added functionality
- Increase your profits with unlimited, royalty-free distribution

### The Best of the “Build From Scratch” and “Buy From A Third Party Vendor” Worlds

#### What Reactor 5 Source Code Offers Your Developers

- State-of-the-Art Process Engine Capabilities
- Dynamic Interaction With Web Services
- XML Interoperability
- Platform and Database Independence
- Comprehensive APIs
- Fully supported platform

#### What Reactor 5 Source Code Offers Your Business

- Faster Time to Market
- Ownership of Your Code to the Core
- Developer Knowledge Transfer and Training
- Increased Sales Through Added Functionality
- Increased Profits Through Unlimited, Royalty-Free Distribution

### Full Maintenance and Support

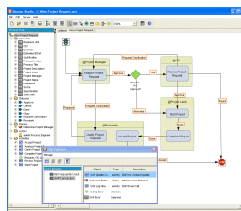
Reactor 5 Source Code software maintenance and technical support is available covering:

- Periodic maintenance releases and bug fixes
- Web-based and email-based technical support
- Quarterly account reviews

### The Reactor 5 Process Execution Framework includes:

#### Reactor 5 Studio

A user-friendly graphical modeling environment that is ideal for defining complex business processes — including nested processes, parallel tasks, and complex conditionals. Provides both point-and-click process authoring, and more powerful scripting language-based programming capabilities.



*The ideal visual process design tool for developers and non-developers alike*

#### Reactor 5 Engine

A high-performance, J2EE-based process engine for rapid deployment and flexible enactment of workflow or process integration applications. Integrates seamlessly with existing J2EE applications.

#### Reactor 5 Portal

A complete JSP/Servlet framework for rapid development of sophisticated web-based user interfaces to workflow applications, or for integrating with existing web-based systems.

To learn more about all Reactor 5 can offer you, download your free evaluation copy today at [www.oakgrovesystems.com](http://www.oakgrovesystems.com).

### Reactor 5.5 Product Features and Benefits

#### Extensibility for Developers

**Parameterized Operands** – Allows developers to define customizable data types.

**Parameterized Policies** – Enables a faster and reusable method of linking events with actions

**Customizable Process Model** – The use of statuses enable the definition of sub-state transition protocols.

**Open Architecture** – Communicate with the Reactor Engine via a comprehensive set of APIs

#### Ease of Use and Rapid Development for Everyone

##### Define

**Clip Explorer** – Enabling drag-and-drop process template creation, the Clip Explorer also allows Clip Libraries to be created, stored and reused for fast process design.

**Integrated Forms** – Allows the capture and storage of data (users, text, etc.) without programming.

**Integrated Business Rules** – Reactor Studio allows users to specify simple routing rules without coding – providing an intuitive and functional graphical representation of the process.

##### Deploy

**One-Click Process Deployment** – Upload processes to the Reactor Engine for execution with a single mouse click.

##### Monitor

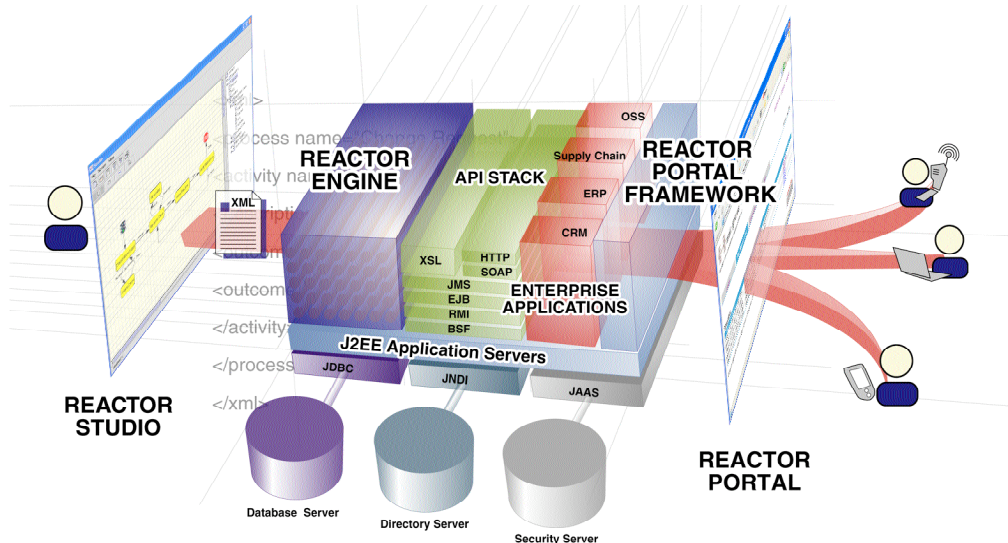
**Reporting** – Reactor Portal incorporates integrated process activity reporting which allows for the real-time reporting of past and currently running processes.

**Business Activity Monitoring** – Reactor Portal provides a graphical view for monitoring the progress of an instance.

**Audit Logging** – Users have complete visibility into a process instance including state changes, statuses, activity start and end times, and operand value changes.

# Reactor 5

## Reactor 5 Workflow Engine – Designed To Fit Your Needs



### The most powerful process model available

Reactor 5's advanced architecture gives you the power, speed and flexibility to streamline your development activities, reuse your process components – or even modify processes on the fly in response to your changing business needs.

- Capable of modeling any business process, including group assignments, parallel tasks and complex conditionals.
- Users and roles are supported with ability to tie into standard directory services such as LDAP.
- XML process templates are cloned into run-time instances and provide control over deployment and changes.
- Activities can include sub-processes, call other applications or other processes activated by internal state changes or external events.

### Lightweight impact on your infrastructure

Reactor 5's small size, universal compatibility and multiple scripting language capabilities allow for rapid integration with minimal impact on existing IT resources.

### Simple integration with your existing systems

Reactor 5 utilizes XML and HTML to integrate with any system, including:

- e-business applications and application integration efforts – both web-based and legacy systems.
- ERP, CRM, Supply Chain, and SFA packages.
- Other workflow systems.

### Dynamic interaction with Web Services

Reactor 5 processes can call Web Services, and other applications can invoke Reactor 5 as a Web Service.

### Broad Support for the Latest Standards and Platforms

- J2EE – Internet age architecture, compatibility and connectivity.
- XML – Uses XML for process definition and for messaging between clients and the server.
- HTTP/HTTPS – Uses HTTP based protocol for communication with the server.
- LDAP – Uses existing directory & authentication services.
- UDDI, WSDL and SOAP for Web Services support.
- JTA, JCA, JDBC – Tie together business processes with unprecedented speed and flexibility.
- SSL – Supports secure, encrypted Internet communications.
- JAAS – Includes user authentication and authorization rules and supports JAAS for authorization of server side scripting.

### Comprehensive suite of components, including:

- Graphical modeling tool provides intuitive environments for defining and deploying processes.
- EJB-based server provides automation engine for business processes and process integration.
- JSP/Servlet framework provides front-end application integration and user interface building tools.

## Reactor 5 Deployment Targets

### J2EE Application Servers

- BEA WebLogic®
- IBM WebSphere®
- Oracle 9iAS
- JBoss
- Any J2EE App Server

### Databases

- Oracle
- IBM DB2
- Sybase
- Microsoft SQL Server
- Any JDBC database

### Operating Systems

- Windows NT/2000/XP
- Linux
- Solaris™
- HP-UX
- Any OS running JDK 1.3+



Oak Grove Systems  
26500 Agoura Road, Suite 102-570  
Calabasas, CA 91302  
Phone 1.818.440.1234  
www.oakgrovesystems.com