

Reactor 5 Workflow Engine - Server License



Workflow Automation

Business Process Integration

Web Services Orchestration

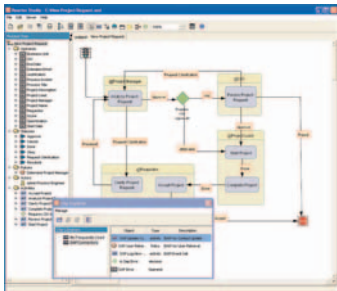
Unlimited User, Per-CPU Priced Server License

Robust, flexible and universally compatible, Reactor 5 Server is the perfect process execution solution for enterprises, solution providers, and consultants.

Featuring our world-class Reactor 5 process execution framework and backed by our world-class support, Reactor 5 Server is perfect for firms seeking a fully functional workflow engine they can use for business process development, execution and deployment.

Available for only \$10,000 per-CPU, Reactor 5 Server is cost effective, simple to deploy and offers a wide variety of benefits, including:

- Unlimited users
- The ability to pay for Reactor 5 on an "as-needed" basis
- Faster time to market
- Full Maintenance and Support



The ideal visual process design tool for developers and non-developers alike

The ideal solution for enterprises, solution providers and consultants

What Reactor 5 Server Offers Your Developers

- State-of-the-Art Process Engine Capabilities
- Dynamic Interaction with Web Services
- XML Interoperability
- Platform and Database Independence
- Comprehensive APIs

What Reactor 5 Server Offers Your Business

- Unlimited Users
- Simple Per-CPU Pricing
- A Fully Functional, Embeddable Process Execution Framework
- Ability to Embed Without the Concern of Source Code Maintenance
- Substantial Reductions in Developer Costs

The Reactor 5 Process Execution Framework

Reactor 5 is the leading process engine for workflow automation, business process management and Web Services orchestration. You receive the run-time version of Reactor 5 which features the following components:

- **Reactor 5 Studio** – User-friendly graphical modeling environment for defining complex business processes—including nested processes, parallel tasks and complex conditionals. Provides both point-and-click process authoring and more powerful scripting language-based programming capabilities.
- **Reactor 5 Engine** – High-performance, J2EE-based process engine for rapid deployment and flexible enactment of workflow or process integration applications. Integrates seamlessly with existing J2EE applications.
- **Reactor 5 Portal Framework** – Complete JSP/Servlet framework for rapid development of sophisticated web-based user interfaces to workflow applications, or for integrating with existing web-based systems.
- Open, standards-based architecture

To learn more about all Reactor 5 can offer you, download your free evaluation copy today at www.oakgrovesystems.com.

Reactor 5.5 Product Features and Benefits

Extensibility for Developers

Parameterized Operands – Allows developers to define customizable data types.

Parameterized Policies – Enables a faster and reusable method of linking events with actions.

Customizable Process Model – The use of statuses enable the definition of sub-state transition protocols.

Open Architecture – Communicate with the Reactor Engine via a comprehensive set of APIs.

Ease of Use and Rapid Development for Everyone

Define

Clip Explorer – Enabling drag-and-drop process template creation, the Clip Explorer also allows Clip Libraries to be created, stored and reused for fast process design.

Integrated Forms – Allows the capture and storage of data (users, text, etc.) without programming.

Integrated Business Rules – Reactor Studio allows users to specify simple routing rules without coding – providing an intuitive and functional graphical representation of the process.

Deploy

One-Click Process Deployment – Upload processes to the Reactor Engine for execution with a single mouse click.

Monitor

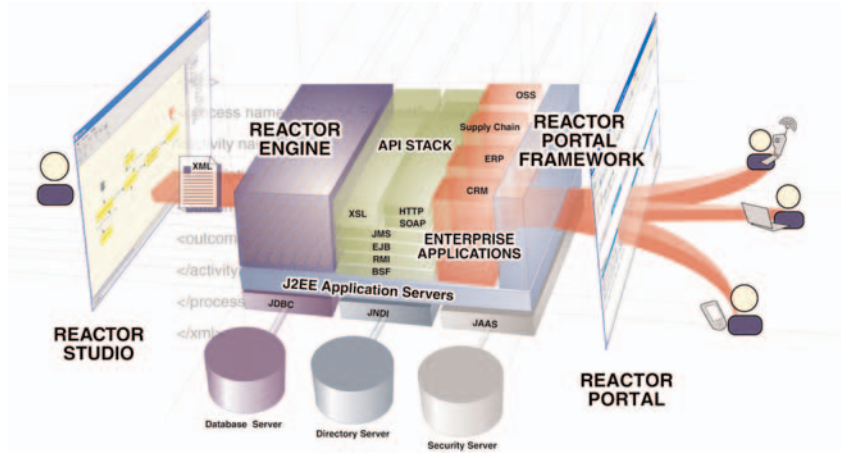
Reporting – Reactor Portal incorporates integrated process activity reporting which allows for the real-time reporting of past and currently running processes.

Business Activity Monitoring – Reactor Portal provides a graphical view for monitoring the progress of an instance.

Audit Logging – Users have complete visibility into a process instance including state changes, statuses, activity start and end times, and operand value changes.

Reactor 5 Workflow Engine

Reactor 5 Workflow Engine – Designed To Fit Your Needs



The most powerful process model available

Reactor 5's advanced architecture gives you the power, speed and flexibility to streamline your development activities, reuse your process components – or even modify processes on the fly in response to your changing business needs.

- Capable of modeling any business process, including group assignments, parallel tasks and complex conditionals.
- Users and roles are supported with ability to tie into standard directory services such as LDAP.
- XML process templates are cloned into run-time instances and provide control over deployment and changes.
- Activities can include sub-processes, call other applications or other processes activated by internal state changes or external events.

Lightweight impact on your infrastructure

Reactor 5's small size, universal compatibility and multiple scripting language capabilities allow for rapid integration with minimal impact on existing IT resources.

Simple integration with your existing systems

Reactor 5 utilizes XML and HTML to integrate with any system, including:

- e-business applications and application integration efforts – both web-based and legacy systems.
- ERP, CRM, Supply Chain, and SFA packages.
- Other workflow systems.

Dynamic interaction with Web Services

Reactor 5 processes can call Web Services, and other applications can invoke Reactor 5 as a Web Service.

Broad Support for the Latest Standards and Platforms

- J2EE – Internet age architecture, compatibility and connectivity.
- XML – Uses XML for process definition and for messaging between clients and the server.
- HTTP/HTTPS – Uses HTTP based protocol for communication with the server.
- LDAP – Uses existing directory & authentication services.
- UDDI, WSDL and SOAP for Web Services support.
- JTA, JCA, JDBC – Tie together business processes with unprecedented speed and flexibility.
- SSL – Supports secure, encrypted Internet communications.
- JAAS – Includes user authentication and authorization rules and supports JAAS for authorization of server side scripting.

Comprehensive suite of components, including:

- Graphical modeling tool provides intuitive environments for defining and deploying processes.
- EJB-based server provides automation engine for business processes and process integration.
- JSP/Servlet framework provides front end application integration and user interface building tools.

Reactor 5 Supported Platforms

J2EE Application Servers

- BEA WebLogic®
- IBM WebSphere®
- Sun Java App Server
- JBoss

JDBC Databases

- Oracle
- IBM DB2
- Sybase
- Microsoft SQL Server

Operating Systems

- Windows NT/2000/XP
- Linux
- Solaris™
- HP-UX
- Any OS running JDK 1.4+

Represented by: